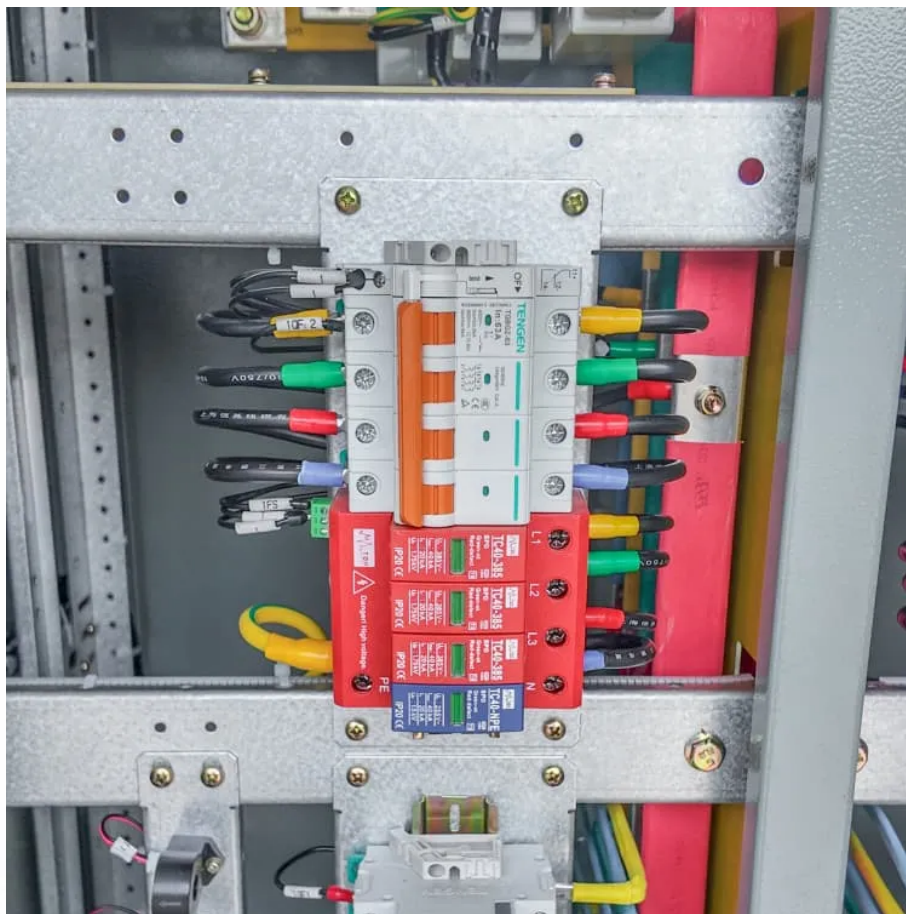


Base station battery charge





Overview

How does a battery group work in a base station?

The equipment in base stations is usually supported by the utility grid, where the battery group is installed as the backup power. In case that the utility grid interrupts, the battery discharges to support the communication switching equipment during the period of the power outage.

How many battery groups does a base station have?

The original battery allocation result is largely skewed that over 65 percent base stations are equipped with only one battery group. Our framework considers both the base station situations and battery features, allocating 2 battery groups to most base stations and 3 or 4 battery groups to those with long-time power outages.

How do I choose a base station?

Key Factors: Power Consumption: Determine the base station's load (in watts). Backup Duration: Identify the required backup time (hours). Battery Voltage: Select the correct voltage based on system design. Efficiency & Discharge Rate: Consider battery efficiency and discharge characteristics.

Why do cellular base stations have backup batteries?

[.] Cellular base stations (BSs) are equipped with backup batteries to obtain the uninterruptible power supply (UPS) and maintain the power supply reliability. While maintaining the reliability, the backup batteries of 5G BSs have some spare capacity over time due to the traffic-sensitive characteristic of 5G BS electricity load.



Base station battery charge

Can telecom lithium batteries be used in 5G telecom base stations?

Jul 1, 2025 · It is easy to install and provides reliable backup power. Conclusion In conclusion, telecom lithium batteries can indeed be used in 5G telecom base stations. Their high energy ...

Backup Battery Analysis and Allocation against Power ...

Jan 17, 2022 · Battery groups are installed as backup power in most of the base stations in case of power outages due to severe weathers or human-driven accidents, particularly in remote ...

Telecom Base Station Backup Power Solution: Design Guide ...

Jun 5, 2025 · Discover the 48V 100Ah LiFePO4 battery pack for telecom base stations: safe, long-lasting, and eco-friendly. Optimize reliability with our design guide.

(PDF) Dispatching strategy of base station backup power ...

Apr 1, 2023 · With the mass construction of 5G base stations, the backup batteries of base stations remain idle for most of the time. It is necessary to explore these massive 5G base ...

How to Determine the Right Battery Capacity for Telecom Base Stations

Mar 10, 2025 · Example: If a base station consumes 500W and needs 4 hours of backup at 48V, the required capacity is: $500W \times 4h / 48V = 41.67Ah$ Choosing a battery with a slightly higher ...

How to Determine the Right Battery Capacity ...

Mar 10, 2025 · Example: If a base station consumes 500W and needs 4 hours of backup at 48V, the required capacity is: $500W \times 4h / 48V = 41.67Ah$...

Communication Base Station Backup Battery

High-capacity energy storage solutions, specifically designed for communication base stations and weather stations, with strong weather resistance to ensure continuous operation of ...

Ultimate Guide to Base Station Power Selection: Lithium vs.

Nov 17, 2025 · With the large-scale rollout of 5G networks and the rapid deployment of edge-computing base stations, the core requirements for base station power systems --stability, ...

How much energy storage battery is used in base stations?

Aug 25, 2024 · How much energy storage battery is used in base stations? Understanding the energy storage battery requirements for base stations involves several factors. 1. The overall ...

Optimal Electricity Dispatch for Base Stations with Battery ...

Jul 11, 2022 · With the development of newer communication technology, considering the higher electricity consumption and denser physical distribution, the base stations become



important ...

Telecom Base Station Backup Power Solution: ...

Jun 5, 2025 · Discover the 48V 100Ah LiFePO4 battery pack for telecom base stations: safe, long-lasting, and eco-friendly. Optimize reliability with ...

Optimum sizing and configuration of electrical system for

Jul 1, 2025 · The rising demand for cost effective, sustainable and reliable energy solutions for telecommunication base stations indicates the importance of integration and exploring the ...

Contact Us

For technical specifications, project proposals, or partnership inquiries, please visit:

<https://www.walmerceltic.co.za>

Scan QR Code for More Information



<https://www.walmerceltic.co.za>