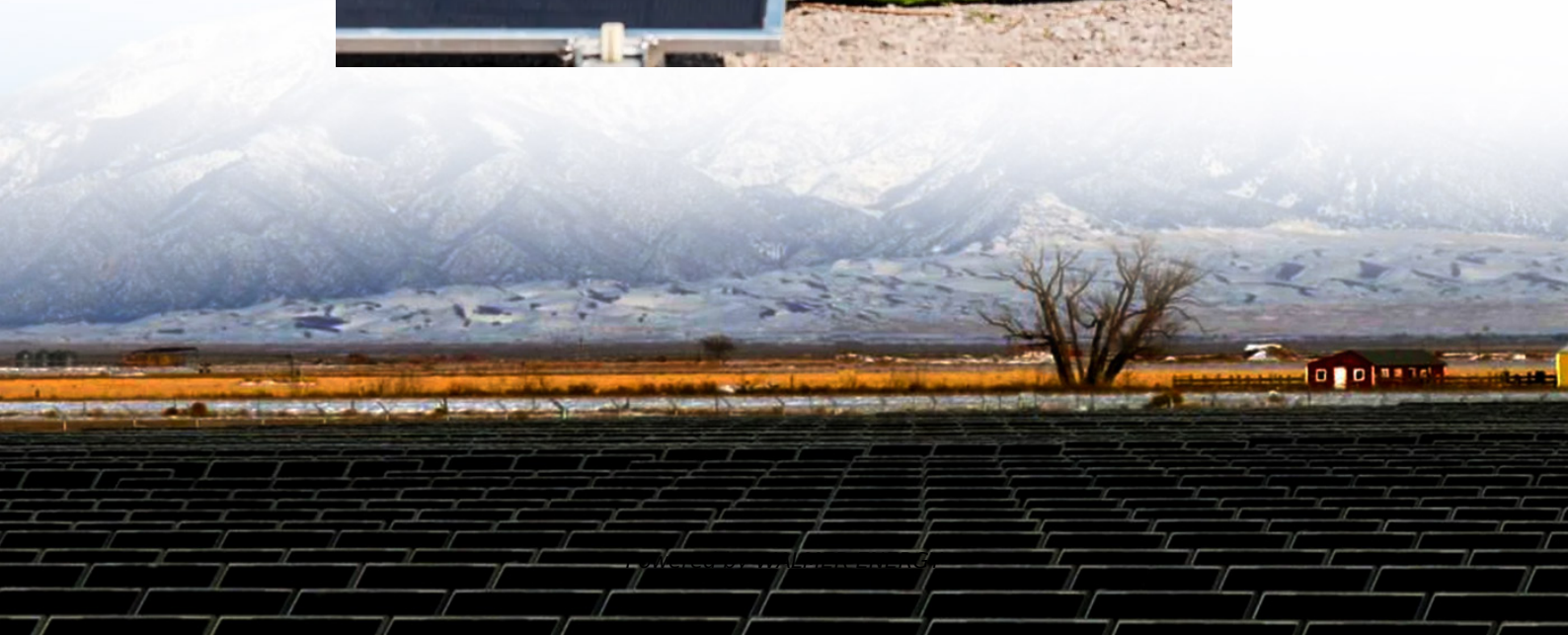


# **Can a 64v inverter and 72v battery be used**





## Overview

---

Can a 12V battery be used as an inverter?

If you are using a 12V battery, then the input voltage of the inverter must match the battery voltage. If the specifications of the battery and the inverter do not match, the system will not operate stably and may even damage the equipment. In addition, choose the right inverter power and battery capacity for your home or commercial needs.

Do inverters and batteries need to match?

The inverter and batteries must match in terms of voltage, capacity, and power output. If you are using a 12V battery, then the input voltage of the inverter must match the battery voltage. If the specifications of the battery and the inverter do not match, the system will not operate stably and may even damage the equipment.

How many batteries can I connect to my inverter?

There is no set limit to how many batteries you can connect to your inverter. But you must understand how you connect your batteries together affects what you can and can't do! For example, connecting your batteries in series will be different to connecting in parallel.

Are all inverters compatible with lithium-ion batteries?

These include the inverter's voltage, charging algorithm, and overall compatibility with lithium-ion technology. Not all inverters are created equal. Some may be specifically designed for traditional batteries, while others can seamlessly integrate with lithium-ion batteries. Check your inverter's specifications to ensure compatibility.



## Can a 64v inverter and 72v battery be used

---

### Connecting Multiple Batteries to an Inverter: Easy Guide

Need more battery capacity on your inverter? Let's look at how to add more batteries and how many batteries you can connect to an inverter.

---

### How Do I Match My Battery Size to My Inverter?

**Voltage Compatibility:** Ensure both the battery and inverter operate at compatible voltages (e.g., 12V, 24V). **Depth of Discharge (DoD):** The percentage of battery capacity that can be used ...

---

### Understanding Battery Capacity and Inverter Compatibility

Aug 20, 2024 · Assuming a 12V battery:  $Wh=200\text{ Ah}\times 12\text{ V}=2400\text{ Wh}$  Thus, a 200 Ah battery at 12 volts has a capacity of 2400 watt-hours. This metric is vital for determining how long a battery ...

---

### Can Solar Battery Be Used with Normal Inverter? A Simple ...

Mar 27, 2025 · Voltage and Capacity Considerations Solar batteries and normal inverters must operate at compatible voltage levels. Most residential inverters work with 12V, 24V, or 48V ...

---

### Connecting Multiple Batteries to an Inverter: ...

Need more battery capacity on your inverter? Let's look at how to add more batteries and how many batteries you can connect to an inverter.

---

### Complete Guide: 12V/24V/48V/72V Batteries, LiFePO4 Cells, ...

With the rapid development of new energy technologies, lithium batteries--especially 12V, 24V, 48V, and 72V variants--as well as LiFePO4 (Lithium Iron Phosphate) batteries and BMS ...

---

### 72V Inverters

Feb 6, 2025 · A. 72V inverters can work with various battery types, including lead-acid, lithium-ion, and nickel-metal hydride, as long as the input voltage matches the inverter specifications.

---

### Can 64v and 72v inverters be used together

Can you connect two inverters in parallel? Absolutely. Sometimes a single inverter cannot provide enough power to meet the demand. In such cases, connecting two inverters in parallel ...

---

### How to Safely Connect a Battery to an Inverter: A Step-by ...

Apr 13, 2025 · Learn how to safely connect your batteries to your inverter with our guide. Avoid common wiring mistakes to optimize performance and extend system life.

---

### Complete Guide: 12V/24V/48V/72V Batteries, ...

With the rapid development of new energy technologies, lithium batteries--especially 12V, 24V, 48V, and 72V variants--as well as ...

---



Can a 64v inverter and a 72v battery be used

Compatibility of Lithium-Ion Batteries with Existing Inverters This blog post will walk you through the essentials of lithium-ion batteries, their benefits, and the steps to seamlessly integrate ...

---

How to Safely Connect a Battery to an ...

Apr 13, 2025 · Learn how to safely connect your batteries to your inverter with our guide. Avoid common wiring mistakes to optimize performance ...

---

Can Solar Battery Be Used with Normal ...

Mar 27, 2025 · Voltage and Capacity Considerations Solar batteries and normal inverters must operate at compatible voltage levels. Most ...

---

Compatibility of Lithium-Ion Batteries with Existing Inverters

Learn how to seamlessly integrate lithium-ion batteries with existing inverters for efficient and reliable power solutions. Maximize energy storage with Invertek Energy.

---

72V Inverters

A. 72V inverters can work with various battery types, including lead-acid, lithium-ion, and nickel-metal hydride, as long as the input voltage matches the inverter specifications.

---

## Contact Us

---

For technical specifications, project proposals, or partnership inquiries, please visit:

<https://www.walmerceltic.co.za>

**Scan QR Code for More Information**



<https://www.walmerceltic.co.za>