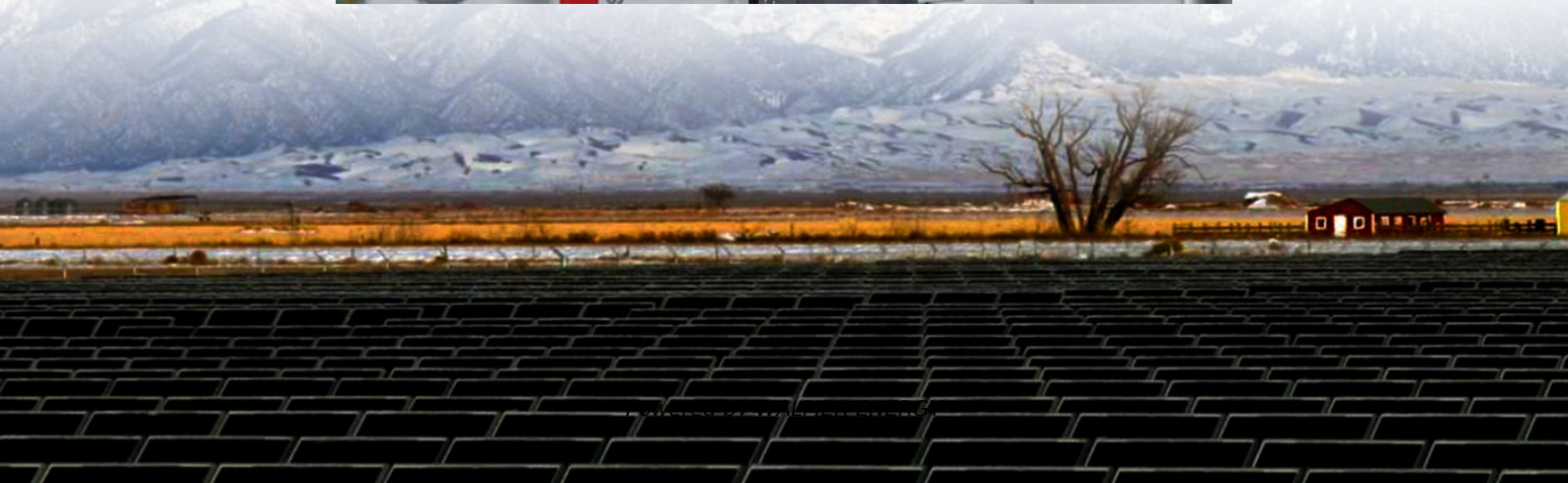
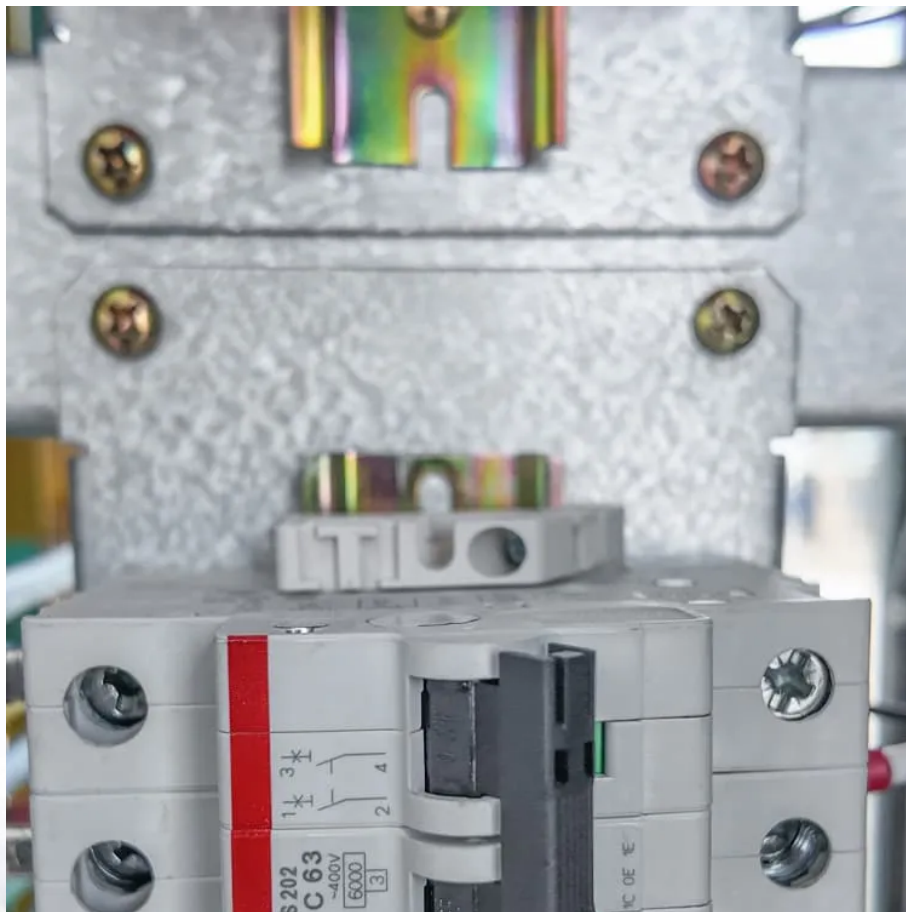


# How many inverters can a 12v solar container lithium battery use





## Overview

---

How many batteries can a solar inverter charge?

This applies to all types of solar inverters regardless of size. The number of batteries you can connect to an inverter cannot be more than 12 times the inverter charging current. A 20A charger can handle 240ah battery maximum. The formula is  $A \times 12 = \text{battery capacity (ah)}$ . If it is a 40A charger the limit is 480ah.

How many batteries can a 36V inverter charge?

If there are three 12V 200ah batteries, the battery voltage is 36V ( $12V \times 3 = 36$ ). An inverter with a 36V can recharge these batteries. The maximum capacity is 600ah ( $200 \times 3 = 600$ ). Battery Parallel Connection. If the battery bank is connected in parallel, the battery bank capacity increases but the battery voltage is the same as each cell.

What voltage should a 12V inverter run on?

The input voltage of the inverter should match the battery voltage. (For example 12v battery for 12v inverter, 24v battery for 24v inverter and 48v battery for 48v inverter Summary What Will An Inverter Run & For How Long?

.

Does a lithium battery work with a solar inverter?

While lithium batteries can't work with every inverter, most modern solar and off-grid inverters now offer lithium compatibility. For optimal performance in home energy stems, choose an inverter specifically designed for lithium battery or LiFePO4 battery systems, and always verify compatibility before purchasing.



## How many inverters can a 12v solar container lithium battery use

---

How do I match a lithium solar battery with ...

Sep 1, 2025 · Conclusion Matching a lithium solar battery with an inverter is not as complicated as it might seem. By considering factors like voltage ...

---

Calculate Battery Size For Any Size Inverter (Using Our ...

Mar 3, 2023 · Instructions! Inverter runtime: is the total number of hours you would need to run your load on an inverter Inverter input Volts (V): Are you using a 12v, 24v, or 48v solar ...

---

Choosing the Best Inverter Size for a 200Ah Lithium Battery

Jun 7, 2025 · A 3,000W inverter on a 12V system draws 250A, which may exceed safe discharge rates for many lithium batteries. How Long Will a 200Ah Lithium Battery Run a 1500W Load?

---

Can Lithium Batteries Work With Any Type of Inverter?

Jul 21, 2025 · The Bottom Line While lithium batteries can't work with every inverter, most modern solar and off-grid inverters now offer lithium compatibility. For optimal performance in home ...

---

Connecting Multiple Batteries to an Inverter: Easy Guide

Need more battery capacity on your inverter? Let's look at how to add more batteries and how many batteries you can connect to an inverter.

---

How Many Batteries can Be Connected To An Inverter?

How Much Current Is Needed to Charge An Inverter Battery?Series vs. Parallel Inverter Battery ConfigurationHow to Connect Batteries in Series and ParallelCan An Inverter Run Without A Battery?ConclusionWe want to get the maximum power from batteries and inverters, but at the same time we do not want to overdo it. By knowing the capability and capacity of your inverter, you can push to the limit without damage. The same goes with the batteries so you do not end up using too little or too much. See more on portablesolarexpert.

```
.rcimgcol .cico { background: #f5f5f5; }  
.b_drk .rcimgcol .cico, .b_dark .rcimgcol .cico { background: unset; }  
.b_imgSet .b_hList  
li.square_m, .b_imgSet .b_hList li.tall_m { width: 75px; }  
.b_imgSet .b_hList  
li.tall_m { width: 113px; }  
.b_imgSet .b_hList li.tall_m { width: 96px; }  
.b_imgSet .b_hList  
li.wide_m { width: 128px; }  
.b_imgSet .b_Card .b_hList li { padding-left: 1px; padding-right: 9px; }  
.b_imgSet .b_Card .b_hList li.tall_wfn { width: 80px; padding-right: 6px; }  
.b_imgSet .b_Card .b_hList li:last-child { padding-right: 1px; }  
.b_imgSet .b_Card .b_imgSetData { padding: 0 8px 8px; height: 40px; }  
.b_imgSet .b_Card .b_imgSetItem { box-shadow: 0 0 1px rgba(0,0,0,.05), 0 2px 3px 0 rgba(0,0,0,.1); border-radius: 6px; overflow: hidden; }  
.b_imgSet .b_imgSetData p  
a { color: #444; outline-offset: 0; }  
.b_subModule .b_clearfix .b_mhdr .b_floatR .b_moreLink, .b_subModule  
.b_clearfix .b_mhdr .b_floatR .b_moreLink:visited, .b_subModule > .b_moreLink, .b_subModule > .b_more  
Link:visited { color: #767676; }  
.b_imgSet .cico .b_placeholder { display: flex; justify-  
content: center; background-color: #f5f5f5; background-clip: content-box; }  
.b_imgSet  
.cico .b_placeholder a { display: flex; }  
.b_imgSet .cico .b_placeholder a  
img { width: 48px; height: 48px; margin: auto; } @media (max-width: 1362.9px) { #b_context .b_entityTP
```



.b\_imgSet li:nth-child(5){display:none}.b\_imgSet .b\_hList li.wide\_m:nth-child(3){display:none}@media(max-width:1274.9px){#b\_context .b\_entityTP .b\_imgSet li:nth-child(4){display:none}.b\_imgSet .b\_hList li.wide\_m:nth-child(2){display:none}}.rcimgcol .b\_imgSet{content-visibility:auto;contain-intrinsic-size:1px 124px}.rcimgcol{height:108px;padding-top:var(--smtc-gap-between-content-x-small);padding-bottom:var(--smtc-gap-between-content-x-small)}.b\_algo:has(.b\_agh) .rcimgcol{padding-top:var(--smtc-gap-between-content-xx-small)}.rcimgcol .b\_imgSet{overflow:hidden}.rcimgcol .b\_imgSet ul{overflow-x:auto;overflow-y:hidden;white-space:nowrap;padding-left:var(--mai-smtc-padding-card-default)}.rcimgcol .b\_imgSet ul::-webkit-scrollbar{-webkit-appearance:none}.rcimgcol .b\_imgSet .b\_hList>li{padding-right:var(--smtc-padding-ctrl-text-side)}.rcimgcol .b\_imgSet .cico{border-radius:unset}.rcimgcol .b\_imgSet .b\_hList>li:first-child .cico,.rcimgcol .b\_imgSet .b\_hList>li:first-child .cico a{border-radius:unset;border-top-left-radius:var(--smtc-corner-card-rest);border-bottom-left-radius:var(--smtc-corner-card-rest);overflow:hidden}.rcimgcol .b\_imgSet .b\_hList>li:last-child .cico,.rcimgcol .b\_imgSet .b\_hList>li:last-child .cico a{border-radius:unset;border-top-right-radius:var(--smtc-corner-card-rest);border-bottom-right-radius:var(--smtc-corner-card-rest);overflow:hidden}.rcimgcol .rcimgcol .b\_sideBleed{margin-left:unset;margin-right:unset}.rcimgcol .b\_imgclgovr{cursor:pointer}.rcimgcol .b\_imgclgovr .cico img:hover{transform:scale(1.05);transition:transform .5s ease}#b\_content #b\_results>.b\_algo .b\_caption:has(.rcimgcol){padding-right:var(--mai-smtc-padding-card-default);margin-right:calc(-1\*var(--mai-smtc-padding-card-default));margin-left:calc(-1\*var(--mai-smtc-padding-card-default));padding-left:var(--mai-smtc-padding-card-default)}.rcimgcol .b\_imgSet .b\_hList .cico a{display:flex;outline-offset:-2px}Dot WattsCalculate Battery Size For Any Size Inverter (Using Our ...Mar 3, 2023 · Instructions! Inverter runtime: is the total number of hours you would need to run your load on an inverter Inverter input Volts (V): Are you using a 12v, 24v, or 48v solar ...

---

### Lithium Battery for Inverter: Pros, Specs, and ...

Jun 24, 2025 · Lithium batteries offer top performance and long life for inverters. This guide covers all you need to know for your power storage ...

---

### Best Battery Size Calculator For Solar And Off-Grid Systems

Free battery size calculator - calculate the perfect battery capacity for your solar system, inverter, or car. Works with lithium-ion, lead-acid, and AGM batteries

---

### Connecting Multiple Batteries to an Inverter: ...

Need more battery capacity on your inverter? Let's look at how to add more batteries and how many batteries you can connect to an inverter.

---

### How many inverters are suitable for 1000w lithium battery

2 days ago · To calculate the battery capacity for your inverter use this formula Inverter capacity (W)\*Runtime (hrs)/solar system voltage = Battery Size\*1.15 Multiply the result by 2 for lead ...

---

### What Size Inverter Can I Run Off a 200Ah Lithium Battery?

Aug 20, 2025 · You can run an inverter rated between 1500W and 2400W off a 200Ah lithium battery depending on voltage and usage. Typically, a 12V 200Ah battery supports up to about ...

---

### Choosing the Best Inverter Size for a 200Ah ...

Jun 7, 2025 · A 3,000W inverter on a 12V system draws 250A, which may exceed safe



discharge rates for many lithium batteries. How Long Will a ...

---

How do I match a lithium solar battery with an inverter?

Sep 1, 2025 · Conclusion Matching a lithium solar battery with an inverter is not as complicated as it might seem. By considering factors like voltage compatibility, capacity, power rating, surge ...

---

Can Lithium Batteries Work With Any Type of ...

Jul 21, 2025 · The Bottom Line While lithium batteries can't work with every inverter, most modern solar and off-grid inverters now offer lithium ...

---

How Many Batteries can Be Connected To An Inverter?

The charging current determines how many batteries you can use with an inverter. The battery capacity cannot exceed the charging current limits, otherwise the battery will take too long to ...

---

Lithium Battery for Inverter: Pros, Specs, and Tips

Jun 24, 2025 · Lithium batteries offer top performance and long life for inverters. This guide covers all you need to know for your power storage needs.

---

What Size Inverter Can I Run Off a 200Ah ...

Aug 20, 2025 · You can run an inverter rated between 1500W and 2400W off a 200Ah lithium battery depending on voltage and usage. Typically, a 12V ...

---

## Contact Us

---

For technical specifications, project proposals, or partnership inquiries, please visit:

<https://www.walmerceltic.co.za>

**Scan QR Code for More Information**



<https://www.walmerceltic.co.za>